

Grand **Australia** & New Zealand Tauck Tour

Estimated Total Mileage

27,500 mi or 44,260 km

International Flight Mileage

21,530 mi or 34,650 km

Earth's Circumference

24,900 mi or 40,100 km

Melbourne, Australia





Alice Springs



MBANTUA
ABORIGINAL
ART
GALLERY



UTOPIA
AUSTRALIA

Yulara, the Red Centre

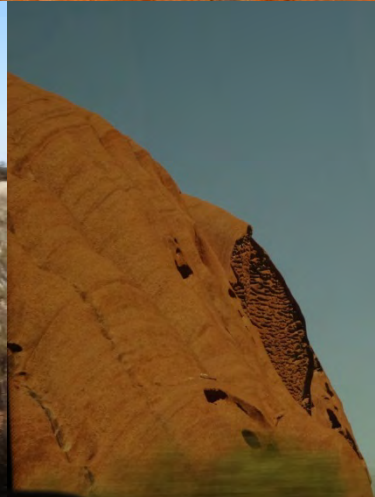


Palya!

Welcome to
**ULURU-KATA TJUTA
NATIONAL PARK**



Uluru









Kulpi Mutitjulu

This is the family cave. For many generations, Anangu families camped here. The men would hunt for kuka (meat) and the women and children would collect mai (bush foods). The food would be brought back here to share.

Mutitjulu cave

At night around the campfire, generations of our people told stories, teaching the children about this place and painting on the rock. Today these stories are still kept and handed down to the children. Paddy Uluru remembers painting here as a young boy around the 1930s.

This is a good place to stay and rest. We were always travelling, travelling, travelling. It is a good place to tell stories, to learn about this country. This is the Tjukurpa country.

Stories on stone

The colours come from a variety of materials. Tutu (red ochre) and un^{tanu} (yellow ochre) are iron-stained clays that were very valuable and traded across the land. Burnt kurkara (desert oak) provides purku (black charcoal), and tjunpa/unu (white ash). The dry materials are placed on a flat stone, crushed and mixed with kapi (water).

Person sitting

Kalaya (emu)

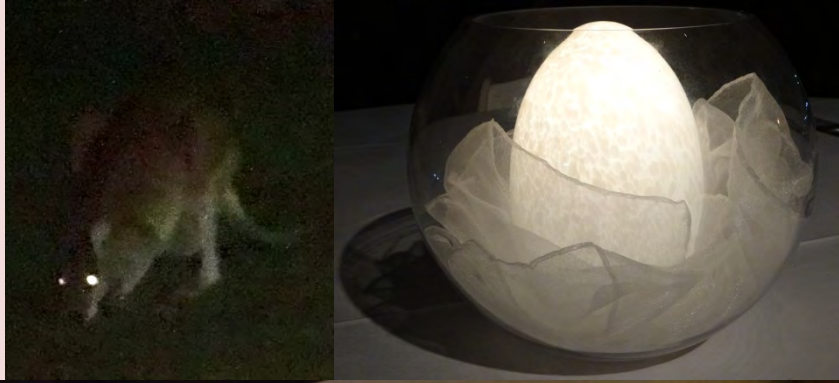
Waterhole





Cairns

Kewarra Beach Resort





Port Douglas to the Great Barrier Reef



Helicopter Ride



Kuranda



Welcome to Kuranda Koala Gardens



Koalas

Koalas are one of Australia's

When people encounter them for the first time they will often be surprised by their behavior. They were presented to the world in 1872 by a man named John Gould. Koalas are a marsupial and are found in the eucalyptus forests of Queensland, Australia. They are a very shy animal and are often found in the same tree for their entire lives. Koalas are a very important part of the Australian ecosystem and are a popular attraction for tourists. They are a very cute animal and are often seen in the Kuranda Koala Gardens. They are a very important part of the Australian ecosystem and are a popular attraction for tourists. They are a very cute animal and are often seen in the Kuranda Koala Gardens.





Hartleys

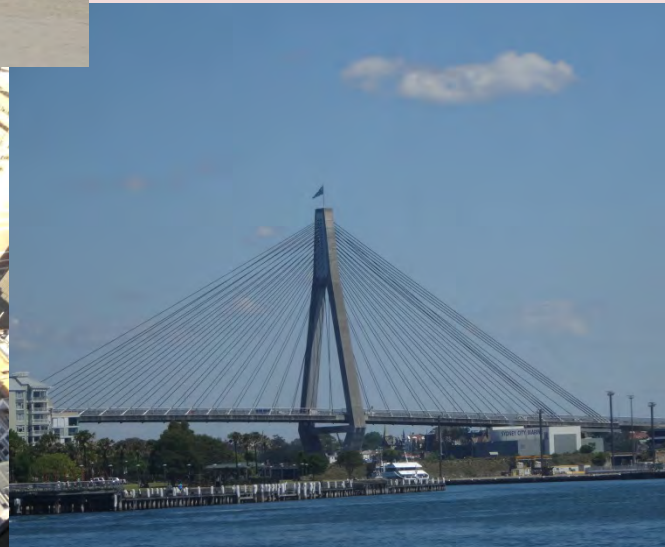


Hot Air Balloon – Atherton Tablelands







Sydney



Harbour Bridge



BridgeClimb! Ascend 134 metres above sea level in 252.5 metres horizontal distance, with no barriers, no sense of time, no going back, just onward, just upward, the ferries below the size of matchboxes, the Opera House shrinking away across the harbour. 1,337 stairs. 1 1/2 football fields above the water, and a breath taking view of Sydney, surrounding suburbs and all the way to the mountains. My heart pounds, my legs shake, I feel every breath....



I climbed it!



The Opera House



Welcome to
Featherdale Wildlife Park
AUSTRALIA





Tasmanian Devil



Short-beaked Echidna

Tachyglossus aculeatus



FEATHERDALE
WILDLIFE PARK



You think
I look
strange?
Look in a
mirror!



FEATHERDALE





Feathers of Featherdale

Sydney Aquarium

